

M60-22



Victoria

A: 27 Metcalf Street, Dandenong South, Victoria, 3175

P: (03) 9796 3744

Western Australia

A: 260 Allen Road Forrestdale, Western Australia, 6112

P: (08) 9418 4988

Queensland

A: Unit 8, 315 Archerfield Road, Richlands, Queensland, 4077

P: (03) 9796 3744

New South Wales

A: Unit D, 26 Penny Place, Arndell Park, New South Wales, 2148

P: (03) 9796 3744



E: sales@abdexhydraulics.com.au

M60-22

Mammut Air / Hydraulic heavy vehicle jacks are engineered and manufactured to offer all customers a lifting solution that is reliable, safe and easy to use.

M60-22



Capacity: 60/30 t 66.1 / 33.1 ton

Net Weight: 93kg / 205 lb

Working Air Pressure: 10-12 bar / 145 - 174 psi

Air Consumption: 600 nl/min

Min. Height: 448 mm / 17.6 in

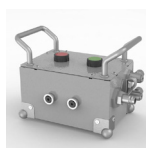
Max. Height: 222 mm / 8.7 in

Number of Pistons: 2

Stroke: 226 mm / 8.8 in

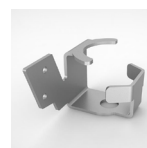
- Lightweight, quiet, compact and easy to manoeuvre.
- Remote control available for extra safety.
- Folding handle.
- Wide range of models and capacities from 60t to 150t.
- Designed for tough Australian conditions.
- Pneumatic tyres for easy operation.
- Internal check valves to prevent unintentional descent.

Accessories



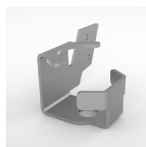
M4096

Remote Control



M4933

Extension Holder
Right



M4934

Extension Holder
Left



M4937

Extension
150 mm



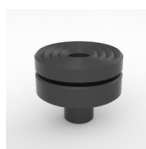
M4938

Extension
250 mm



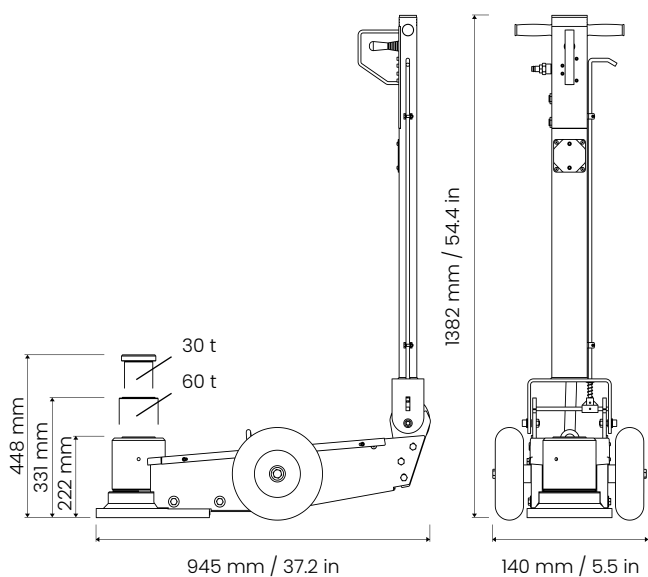
M4939

Extension
300 mm



A04492

Tilt Saddle



sales@abdexhydraulics.com.au



www.mammut.com.au